

# SPOT THE SHUTTLECOCK 5



## Win £5! — 50p per go

The shuttlecock has been removed from this photo.

Mark with a cross where you think it is\* — you can have as many tries as you like for 50p per try. Seal your form and coins in an envelope (remembering to fill in the details below) and put it through the door of 54 Freebrough Road (Janice Lofthouse).

Entries must be in by Tuesday May 27th.

Name ..... Phone .....

Address .....

Number of entries ..... at 50p each = £..... (enclosed)

Promoted by the Badminton Group (660515) in support of the Moorsholm Memorial Hall Renewal Fund

\*The shuttlecock position has been determined by an independent panel of badminton players, using their skill and judgement. The winner will be the entrant whose cross most closely matches the centre of that position.

Published by Moorsholm Memorial Hall, 01287 660839

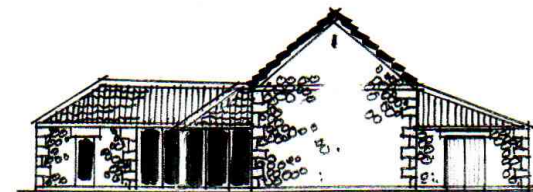
This issue sponsored by Lily & Ray Richardson



# Newsletter

Issue 5 May 08

## Something to See



Is this what a renewed Memorial Hall will look like? More details on P2

### Easter Coffee Morning

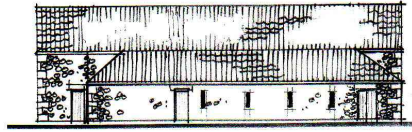
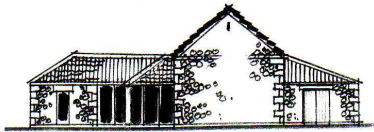
Thanks to everyone who supported this event, which raised a further £224.25 for the Renewal Fund. The large number of raffle prizes donated is very much appreciated. Once again, the 'Geordie Girls' (Jean Bainbridge and Anthea Aldous) were the main organisers. The Teddys name of 'Boris' was guessed by Tom Cartwright

### Doggone (but came back again!)

There's been a special cash donation of £50 from Joy & Dennis Richardson to say thank you to all those in the village who helped look for their German Shepherd Dog, Kimbo. He was found safe and well (and hungry!) at Moorside Farm, after 4 nights away from Elm Heads Farm.



- Joy & Dennis Richardson £50
- Easter Coffee Morning £225
- Total at April 08 £10,000



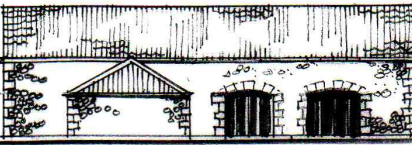
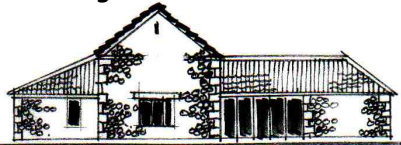
## See The Plans

Architect Geoff Stephenson has been working closely with a Memorial Hall sub-committee, and has produced a proposed layout and design for a new Hall on the Freebrough Road site. This will then be sent to Belmont House in Guisborough as the first stage in applying for the essential Planning Permission, without which we can't start to approach potential funders.

It's not been easy to combine the range of needs that a community hall requires, with the rather restricted shape of the site and the need to be 'neighbour-friendly'. The Committee are anxious that the new Hall should be an attractive and desirable village asset for decades to come, and are delighted that Geoff Stephenson has produced a series of drawings that have the potential to give Moorsholm a 'future-proof' and sustainable community hall, which (perhaps most importantly) will dignify its additional status as the village's war memorial.

The Committee are keen that the village should be able to see these proposals, so there will be a chance to view them (and meet the architect) in the Hall on **Saturday May 17th** between 10.00 and 12.00. Refreshments will be available.

If there's anyone who can't get to this meeting, but would still like to see the detailed plans in the few days afterwards, please phone Ken Richardson (660653) or Graeme Aldous (660515), who will try to arrange something.



In view of her generous support for the Memorial Hall over the years, the Committee have invited Molly Wood to become our Honorary Vice-President. We are delighted to say that she has accepted.

## Seven more winners



There have been two monthly draws held since Newsletter 04, so we have 6 winners to congratulate.

In the March draw, the first prize (of £25) went to Ray Richardson, with

C.Walker and Sheena Smith taking home £15 and £10 respectively. In the April draw, John Harrison (the 200 Club organiser) saw his own number come out first, followed by David Anker and Jack Thornton.

There will be no more membership applications accepted until next year, but thanks to everyone who subscribed for 2008. Your subs have raised £630 for the Renewal Fund... and of course, you still have 7 chances of winning one of the prizes.

The next draw will be made at the MMH Committee Meeting on the third Monday of May (19th), and the winners will be notified.



## Spot The Shuttlecock

Competition No 4 was held at the Easter Coffee Morning, and was won by a very precocious Phoebe Aldous, who (possibly with a little help from her dad) got nearest to the centre of the shuttlecock, and won an M&S Simnel Cake (kindly donated by Jean Bainbridge). Thanks to everyone who gave Raffle Prizes.

This issue's Spot The Shuttlecock is on P4. We hope that we'll get many more entries than the five we got last time — after all, it's only 50p per entry, it's fun, and you could win a fiver.

## Other Hall Events

Moorsholm WI meets every 2nd Monday of the month at 7.15pm. Everyone welcome — come for a 3-meeting free trial!

Keep Fit Sessions are running on Wednesday evenings 6.00 — 7.00 . Tone yourself up for just £2.50 a session.